

# TERMINAL CONNECTOR BIMETALLIC TORQUIMETRIC LUG



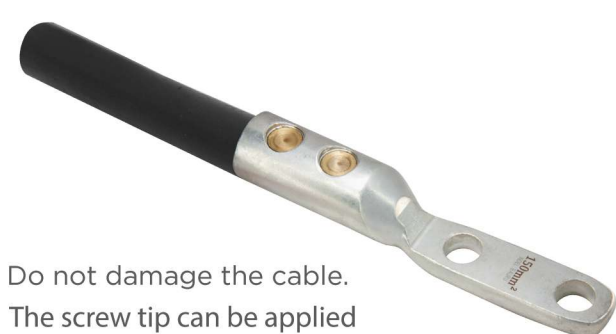
TORQUIMETRIC SCREW WITH PIVOT TIP

Manufactured with one or two fixing screws and lug with one or two holes.

**Practicality, facility and speed during the installation process.**  
**Waive the use of special tools!**



STRETCH MARKS  
Better electrical contact.

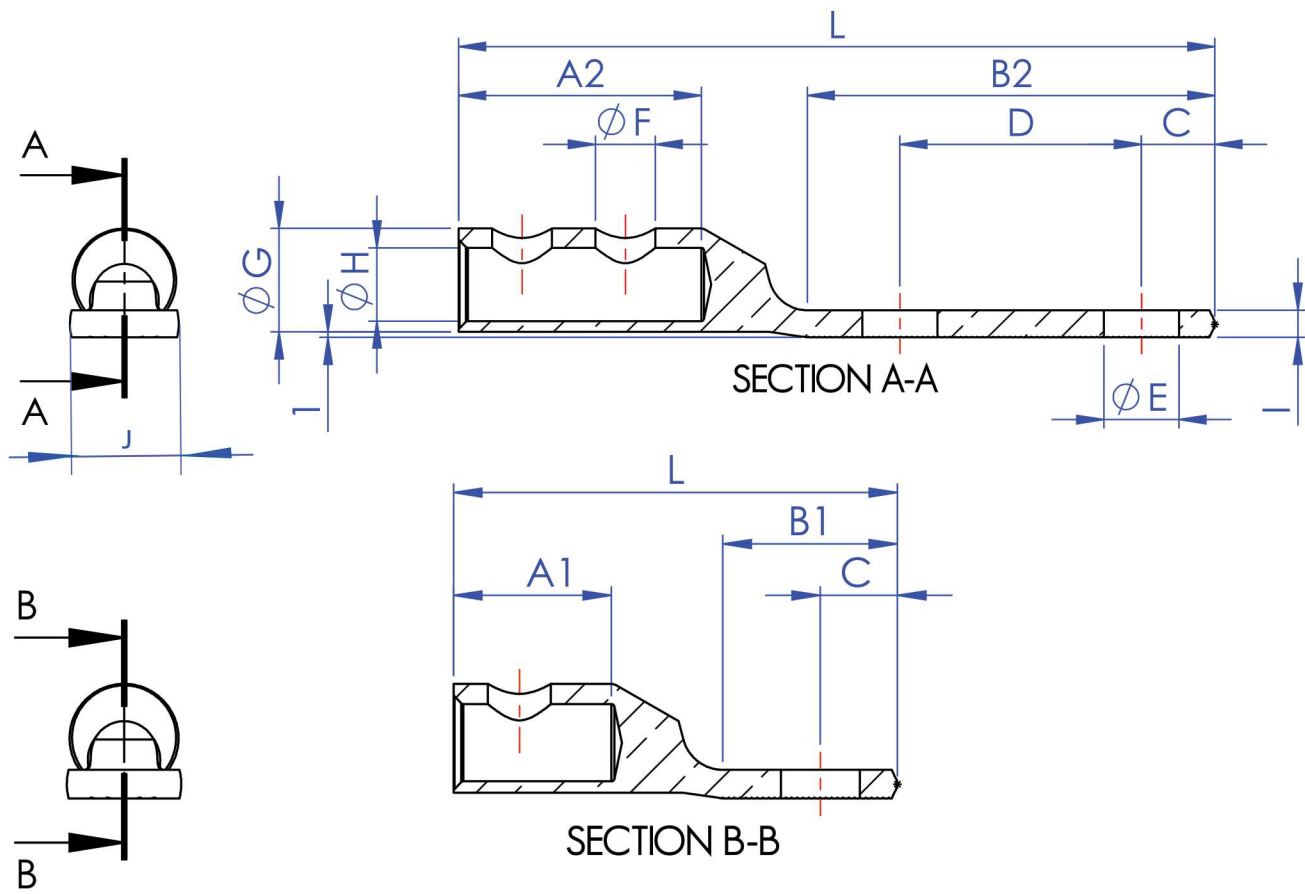


Do not damage the cable.  
The screw tip can be applied with copper cable.

This is a product used by installers to connect cables at various electrical contact points, it can also be used in electrical panels in general, cable splicing, etc

## MAIN BENEFITS

- It can be applied in copper cables from 10mm<sup>2</sup> to 240mm<sup>2</sup>;
- Cold forming process in tinned electrolytic copper;
- Conductivity improvement;
- Corrosion resistant.



A1 - 1 SCREW  
A2 - 2 SCREWS

B1 - 1 HOLE  
B2 - 2 HOLES

SECTION	A1 ±0.50	A2 ±0.50	B1 ±0.50	B2 ±0.50	C ±0.50	D ±0.50	E ±0.20	F	G ±0.10	H ±0.20	I ±0.10	J ±0.50	L ± (B1 or B2)
16mm <sup>2</sup>	25.00	*	13.50	29.50	6.00	16.00	5.50	M6	11.10	5.50	3.00	10.00	47.00 or 63.00
25mm <sup>2</sup>	25.00	*	16.50	32.50	6.00	16.00	6.50	M7	12.70	7.00	3.50	11.00	51.00 or 67.00
35mm <sup>2</sup>	*	35.00	18.00	37.00	8.00	18.00	8.50	M8	14.28	8.50	3.80	13.00	63.00 or 82.00
50mm <sup>2</sup>	*	40.00	19.60	42.00	9.00	22.00	10.50	M8	17.46	9.90	4.60	15.00	70.00 or 92.40
70mm <sup>2</sup>	*	40.00	22.60	67.00	10.00	44.40	10.50	M10	19.05	11.50	5.80	18.00	73.00 or 117.40
95mm <sup>2</sup>	*	45.00	22.60	67.00	10.00	44.40	10.50	M12	22.22	13.50	6.70	20.00	89.00 or 133.40
120mm <sup>2</sup>	*	45.00	28.60	73.00	13.50	44.40	13.60	M12	23.81	15.00	7.80	22.00	95.00 or 139.40
150mm <sup>2</sup>	*	50.00	28.60	73.00	13.50	44.40	13.60	M14	27.10	17.50	8.40	24.00	102.00 or 146.40
185mm <sup>2</sup>	*	60.00	28.60	73.00	13.50	44.40	13.60	M14	30.00	18.50	10.50	27.00	113.00 or 157.40
240mm <sup>2</sup>	*	60.00	35.60	80.00	17.00	44.40	13.60	M18	32.00	21.30	9.00	30.00	123.00 or 167.40